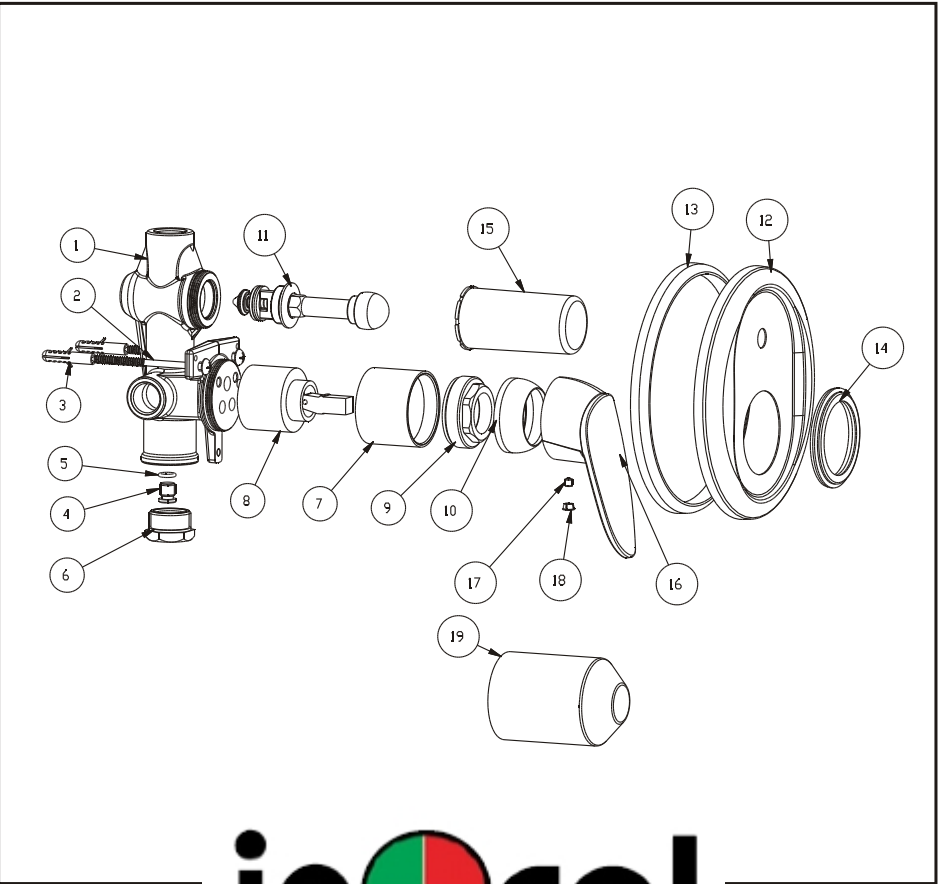


Concealed bath/shower mixer

Installation Instruction

Please read this instruction carefully so as to avoid the installation difficulty.

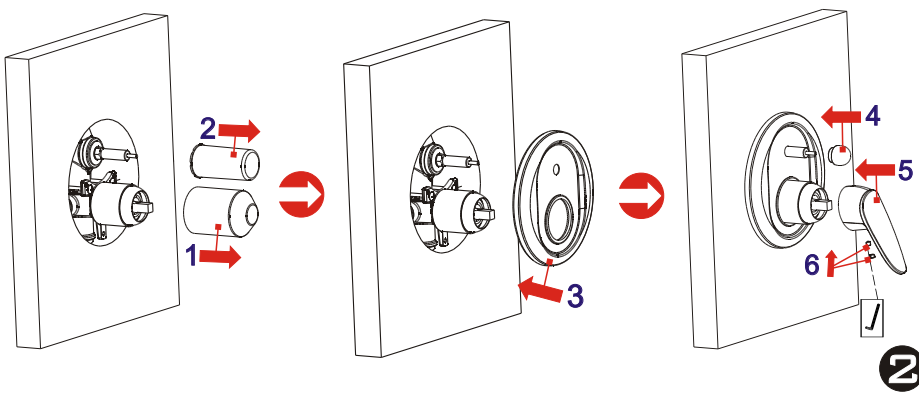
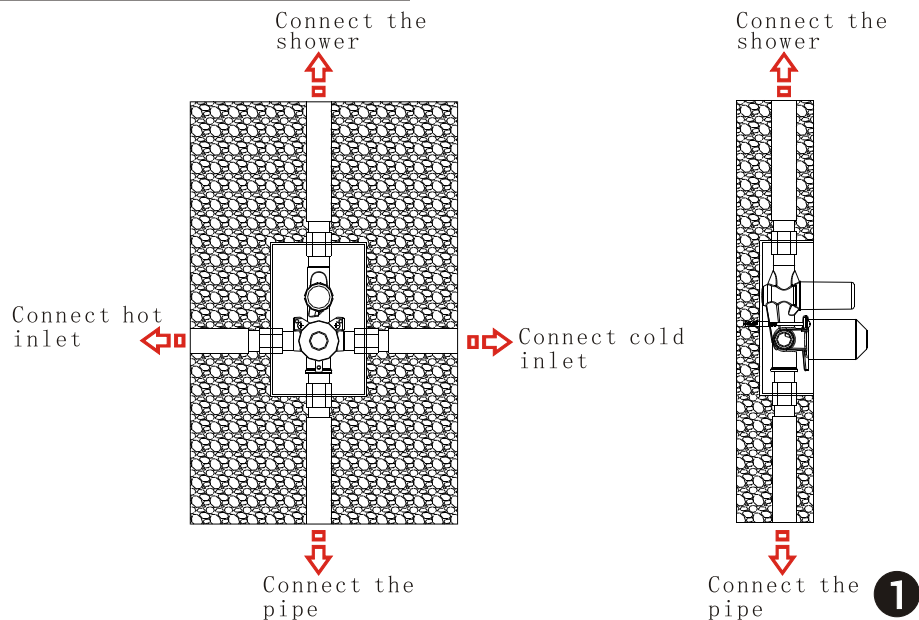


inocal

Components List

No.	Component	Material	Quantity
1	Main body	BRASS	1
2	Cross-head screw	ZINC	2
3	Plastic sleeve	PE	2
4	Stopper	BRASS	1
5	O-ring	NBR	1
6	Connection union	BRASS	1
7	Copper cover	BRASS	1
8	Ceramic cartridge		1
9	Cartridge fastener	BRASS	1
10	Cap	BRASS	1
11	Diverting valve		1
12	Escutcheon	BRASS	1
13	Ring	FOAM	1
14	Rubber fastening ring	NBR	1
15	Safe cover for diverter	ABS	1
16	Handle	ZINC	1
17	Female allen screw	SUS304	1
18	Decorating plug	ABS	1
19	Safe cover for main body	PE	1

Installation Step



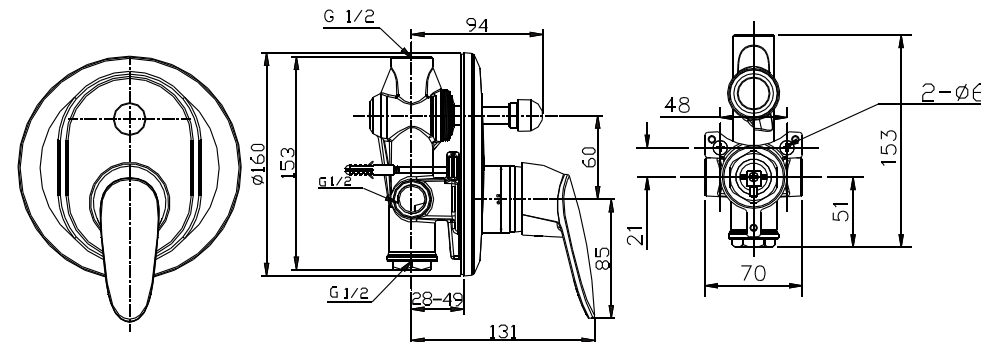
* Attention: the inner radii of the G1/2 connection pipe is not less than $\phi 13\text{mm}$.

** Read the Installation Fig and confirm the installing position.

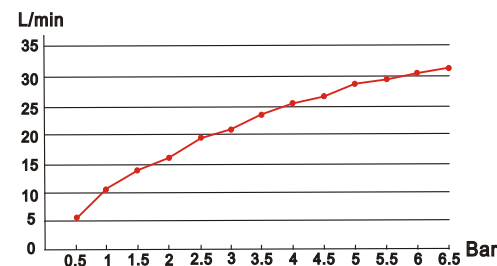
*** Test:

Open the supply pipes, close the ceramic cartridge and check the connections for leakage; open the ceramic cartridge and check the smooth water flow. Decorate the wall after checking and remove the safe cover. Install the escutcheon and handle.

Installation Fig



Flow rate Curves



Test pressure: 1.6MPa (16bar)

Flow pressure:

Min 0.05MPa

Max 1.60MPa

Recommended pressure:

0.1MPa to 0.8MPa (1 to 8 bar)

Note

1. Ensure to clean the water supply pipe before installing to avoid being jammed.
2. The cold-water supply must be connected on the right and the hot-water supply on the left.
3. Check the installing dimension according to the Figure and ensure it is installed correctly.
4. Hot-water inlet must not be over 80°C.